



Affordable Cabling Solutions  
For Discerning Hi Fi Enthusiasts



NORDOST



# LEIF (pron; life)

## Leif By Name, Life By Nature

Since its inception in 1991, Nordost has built a shining reputation due to its comprehensive approach to cable design. Each cable, hand assembled in our Massachusetts-based facility, has been meticulously engineered to use optimal materials and geometry in order to yield the best performance and function in the industry. Nordost believes that although cables naturally act as filters, it is our aim as cable manufacturers to filter the sound as little as possible, not only delivering a realistic reproduction of the music, but also creating a true and cohesive performance in the comfort your own listening room.

Nordost's entry-level cable ranges are perfect examples of quality cabling set at an affordable price range. The Leif family uses scientifically proven methods and technology derived from the development of our Valhalla and Odin ranges, and

applies these basic principles to create cables which evoke dynamic, low-loss and realistic performances from even modest components and loudspeakers.

Leif cables are constructed using silver-plated, OFC solid core conductors, which form the basis of Nordost's great sound. The conductors are then treated with Nordost's innovative precision FEP extrusion process, where each Leif conductor is individually enclosed in FEP insulation. This technique improves the dielectric properties of the cables in order to increase signal speeds and accuracy in signal transfer.

To build upon this foundation, Leif cables are designed with a mechanically tuned construction that optimizes the dimensions and spacing of conductors, to enhance the dielectric even further.





# Power Cords

## The First Step Towards True High Fidelity

In order to make the most out of your audio system, it is important to have a solid foundation. The power cords used throughout hifi, or even mid-fi, rigs are a huge part of that foundation. The caliber of performance your components are capable of achieving is directly correlated to the quality of AC power running the system itself. Nordost's Leif power cords allow even modest components to reach a new level of potential.

Leif cables profit from the years of research that went into developing Nordost's reference-level products, and adhere to the same basic design philosophy as our highly revered Valhalla and Odin Ranges. Leif Series power cords utilize FEP extrusion, as well as a proprietary technology called Micro Mono-Filament, a process in which a single strand of FEP is wrapped around each conductor before being encased in an FEP tube, creating a virtual air-gap. Introducing Micro Mono-Filament technology to power cord designs ensures that the AC supply is being delivered without limiting or slowing down the electrical current, allowing your system to respond to the dynamic demands of the musical signal.



Leif Power Cords are ultra-fast, low-loss cables that maintain the low source impedance of the AC supply. Introducing Purple Flare, Blue Heaven or Red Dawn power cords into your system will enhance the dynamics, color, and texture in the reproduction of music, and introduce a new layer of reality to your system's performance.

### PURPLE FLARE

**Insulation:** Fluorinated Ethylene Propylene (FEP)  
**Construction:** Micro Mono-Filament Design  
**Conductors:** 2 x 16 AWG  
**Material:** 65 strand 99.9999% OFC  
**Capacitance:** 10.0pF/ft  
**DC Resistance:** 4.4 Ohms per 1000ft/304M  
**Termination:** US (NEMA), EU (Schuko), UK (13 Amp) or AUS to IEC-C7 (Figure 8)

### BLUE HEAVEN

**Insulation:** Fluorinated Ethylene Propylene (FEP)  
**Construction:** Micro Mono-Filament Design  
**Conductors:** 3 x 16 AWG  
**Material:** 65 strand 99.9999% OFC  
**Capacitance:** 10.0pF/ft  
**DC Resistance:** 4.4 Ohms per 1000ft/304M  
**Termination:** US (NEMA), EU (Schuko), UK (13 amp) or AUS to IEC-C15 (15A IEC)

### RED DAWN

**Insulation:** Fluorinated Ethylene Propylene (FEP)  
**Construction:** Micro Mono-Filament Design  
**Conductors:** 3 x 14 AWG  
**Material:** 105 strand 99.9999% OFC  
**Capacitance:** 10.0pF/ft  
**DC Resistance:** 2.8 Ohms per 1000ft/304M  
**Termination:** US (NEMA), EU (Schuko), UK (13 amp) or AUS to IEC-C15 (15A IEC) or IEC-C19 (20A IEC)







# Analog Interconnects

## A Simple Solution To Serious Sound

An ideal, high quality, audio cable neither adds nor detracts to the signal it carries. By adding a neutral cable like this to your sound system, you are able to produce a more realistic performance. The defining factor in Nordost's Leif Series interconnects isn't found in filters or rare materials, but rather in precise engineering and detailed construction.

Leif Series Analog Interconnects are available in four distinct ranges: White Lightning, Purple Flare, Blue Heaven, and Red Dawn. Each of these four interconnect options are constructed using silver-plated, solid core OFC conductors, which undergo an intricate FEP extrusion process to enhance the dielectric properties of the cables' insulation. The cables are then terminated in gold-plated XLR or RCA connectors. Leif Series interconnects are the perfect interface for your mid-fi and hifi components, maximizing signal transmission without filtering or adding color to the intended sound.



### WHITE LIGHTNING

**Insulation:** Fluorinated Ethylene Propylene (FEP)  
**Conductors:** 4 x 26 AWG  
**Material:** Silver-plated 99.9999% solid core OFC  
**Capacitance:** 43.0pF/ft  
**Inductance:** 0.046uH/ft  
**Velocity of Propagation:** 85% speed of light  
**Overall Shield Coverage:** 95% Braid  
**Termination:** Gold-plated RCA or XLR

### PURPLE FLARE

**Insulation:** Fluorinated Ethylene Propylene (FEP)  
**Conductors:** 6 x 26 AWG  
**Material:** Silver-plated 99.9999% solid core OFC  
**Capacitance:** 55.0pF/ft  
**Inductance:** 0.037uH/ft  
**Velocity of Propagation:** 85% speed of light  
**Overall Shield Coverage:** 95% Braid  
**Termination:** Gold-plated RCA or XLR

### BLUE HEAVEN

**Insulation:** Fluorinated Ethylene Propylene (FEP)  
**Conductors:** 4 x 24 AWG  
**Material:** Silver-plated 99.9999% solid core OFC  
**Capacitance:** 45.0pF/ft  
**Inductance:** 0.046uH/ft  
**Velocity of Propagation:** 85% speed of light  
**Overall Shield Coverage:** 95% Braid  
**Termination:** Gold-plated RCA or XLR

### RED DAWN

**Insulation:** Fluorinated Ethylene Propylene (FEP)  
**Conductors:** 6 x 24 AWG  
**Material:** Silver-plated 99.9999% solid core OFC  
**Capacitance:** 60.0pF/ft  
**Inductance:** 0.035uH/ft  
**Velocity of Propagation:** 85% speed of light  
**Overall Shield Coverage:** 95% Braid  
**Termination:** Gold-plated RCA or XLR

# Subwoofer Cable

## Superior Integration

The Blue Heaven Subwoofer Cable allows music lovers to completely integrate subwoofers with their loudspeakers, creating a well-rounded experience, highlighting even the lowest frequency extensions on the spectrum. This uniquely designed interconnect is specifically developed for use with subwoofers in both high-quality stereo and home theatre applications. Its flat, parallel construction ensures low signal loss, making it ideal for running line-level signals over long distances. The Blue Heaven Subwoofer Cable is intentionally voiced to deliver superior, low-frequency performance, and will elicit greater clarity and depth from any subwoofer, while preserving the precision and speed necessary to enjoy well rounded, seamless, and all-encompassing sound from music, movies, and television.



### BLUE HEAVEN

**Insulation:** Fluorinated Ethylene Propylene (FEP)  
**Construction:** Flat, Parallel  
**Conductors:** 4 x 22 AWG  
**Material:** Silver-plated 99.9999% solid core OFC  
**Capacitance:** 60.5pF/ft  
**Inductance:** 0.03μH/ft  
**Velocity of Propagation:** 74% speed of light  
**Overall Shield Coverage:** 95% Braid  
**Termination:** Gold-plated RCA or XLR  
**Configuration:** Straight, Y, or Y to Y

# iKable Interconnect

## Digital Done Differently

A high quality auxiliary cable is invaluable in an age where digital files and portable audio devices have shifted from a novelty, to a standard in audio systems. The Blue Heaven iKable now makes it possible to enjoy that sought after hifi quality sound from portable audio devices. The Blue Heaven iKable combines silver-plated, OFC solid core conductors with Nordost's innovative precision FEP extrusion technology, greatly improving dielectric properties in order to increase signal speeds and accuracy in signal transfer. The result is a detailed and dynamic reproduction of your digital music files that has previously been impossible to achieve at this price point.



### BLUE HEAVEN

**Insulation:** Fluorinated Ethylene Propylene (FEP)  
**Conductors:** 4 x 24 AWG  
**Material:** Silver-plated 99.9999% solid core OFC  
**Capacitance:** 45.0pF/ft  
**Inductance:** 0.046μH/ft  
**Velocity of Propagation:** 80% speed of light  
**Overall Shield Coverage:** 95% Braid  
**Termination:** Gold-plated connectors available in 3.5mm stereo mini to 3.5mm stereo mini, (2x) XLR or (2x) RCA



# Tonearm Cable +

## The MVP For Your LPs

The tonearm lead is one of the most critical audio cables in an analog system. The fragile nature of the signals it carries demands a purpose-built, low capacitance conduit, in order to maximize the authentic and natural musical reproduction that LPs offer.

The Blue Heaven Tonearm Cable + uses a twisted pair cable design to create a left and right channel, which are individually shielded in order to eliminate inter-channel crosstalk. It also employs a separately shielded, silver-plated bond wire, wrapped in Micro

Mono-Filament, which runs alongside the left and right channel to help minimize noise from the line. However, the most exciting aspect of this cable design is its revolutionary grounding solution. Nordost has introduced detachable, silver-plated ground whips, complete with Micro Mono-Filament technology, to further enhance this groundbreaking cable. These ground whips completely eliminate any noise that could be introduced during signal transfer, regardless of the unique construction of the components found in each individual sound system.



### BLUE HEAVEN

**Insulation:** Fluorinated Ethylene Propylene (FEP)

**Construction:** 2 Twisted pairs individually shielded

**Conductors:** 4 x 28 AWG

**Material:** Silver-plated 99.9999% solid core OFC

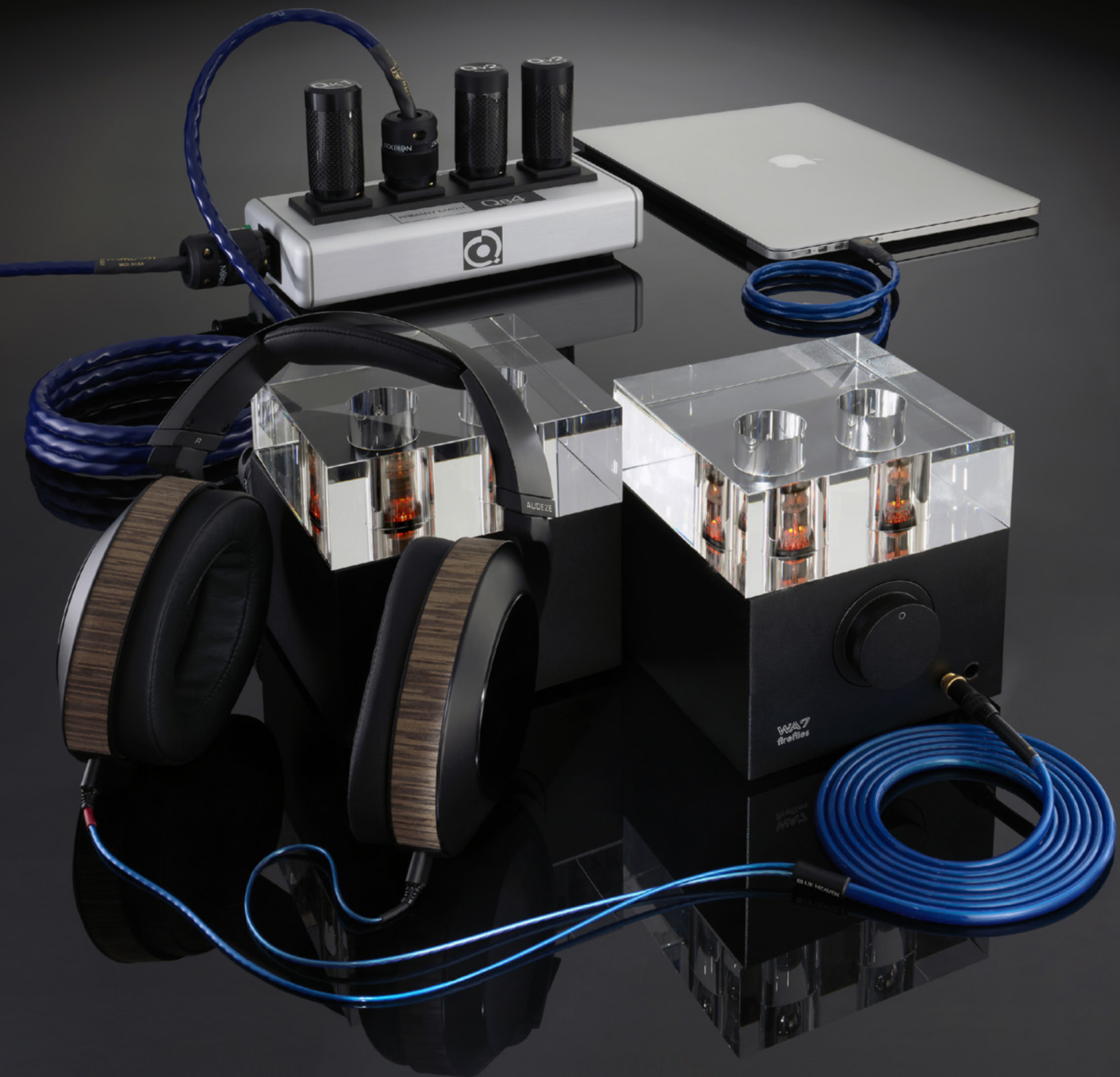
**Bond / Grounding Whips:** 24 AWG silver-plated, stranded OFC, Micro Mono-Filament design

**Capacitance:** 15.13pF/ft (49.5pF/m)

**Velocity of Propagation:** 74% speed of light

**Overall Shield Coverage:** 97%

**Termination:** MoonGlo® Straight or 90 degree low-mass 5-pin Din, RCA, or XLR connectors. Whips and bond wire terminated with gold-plated 5mm spades



# Headphone Cable

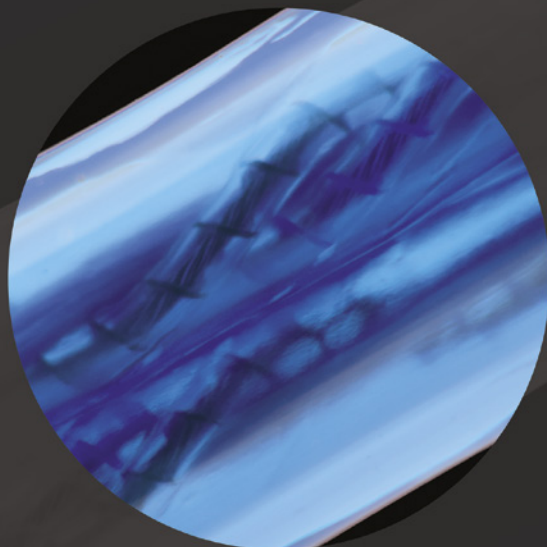
## Music To Your Ears

Owning a personal audio rig has become a common entry-point for future audiophiles, and a personal audio setup wouldn't be complete without a quality pair of headphones. But just like all audio components, even headphones need a solid foundation in order to achieve their full performance potential. Nordost's Blue Heaven Headphone Cable is a profound improvement over the sub-standard, detachable wire provided with many headphones, elevating the listening experience to new heights.

The Blue Heaven Headphone Cable offers a unique combination of technological innovation, pliability and strength to make the best interface for mid to high level headphones. Nordost uses 34 AWG 7/42 conductors, which are twisted into a Litz construction, increasing flexibility, eliminating triboelectric noise, and improving upon its mechanical damping. Our proprietary Micro Mono-Filament technology is then applied, which involves individually wrapping each conductor with a strand of FEP, before being encased in extruded FEP insulation, drastically improving the cable's dielectric.

Unlike many other cables, which are typically plugged in and left alone, a headphone cable is constantly being changed out, moved around and pulled on—durability matters. In order to accommodate the added demands on our headphone cables, Nordost has included an Aramid fiber strength member to the construction of this cable. Aramid fibers serve a dual purpose: not only do they ensure the mechanical integrity of the cable, transferring the strain away from the conductors, but the resonating properties of Aramid fibers also enhance sound quality.

The Blue Heaven Headphone Cable is terminated with a 3.5mm stereo mini plug and is provided with a threaded 3.5mm to 6.3mm (1/4in) stereo phono adapter that easily and securely screws onto the original termination. Due to the various terminations available, the Blue Heaven Headphone Cable is compatible with many different players in the headphone market.



### BLUE HEAVEN

**Insulation:** Fluorinated Ethylene Propylene (FEP)

**Construction:** Micro Mono-Filament, 7 strand Litz design

**Conductors:** 4 x 34 AWG

**Material:** 99.9999% OFC

**Capacitance:** 10.7 pF/ft

**Inductance:** 0.15µH/ft

**Velocity of Propagation:** 80% speed of light

**Termination:** All cables come terminated with a 3.5mm Stereo Mini Connector and are supplied with a screw-on 1/4" (6.3mm) Stereo Phono Adapter. See [www.nordost.com](http://www.nordost.com) for compatible headphones and available termination options for the headphone end of the cable.



# Ethernet Cable

## The Ideal Interface For Data Transfer

High quality Ethernet cables are the key to achieving a suitable interface when connecting first-rate AV components to a home network. The Blue Heaven Ethernet Cable is the solution that digitally-driven, hifi enthusiasts have been waiting for. The screened foiled twisted pair (s/ftp) design employed in the Blue Heaven Ethernet Cable fully eliminates cross-talk, while improving noise resistance and maintaining the integrity of data files being transferred over long distances. This groundbreaking cable allows Network Attached Storage (NAS) devices and music streaming to be fully integrated into a hifi system, while improving its sonic performance.

### BLUE HEAVEN

**Insulation:** High-Density Polymer

**Construction:** Screened Foiled Twisted Pair Design (s/ftp)

**Conductors:** 8 x 24 AWG

**Material:** Solid core copper conductors

**Overall Shield Coverage:** Fully Shielded Dual Braid

**Termination:** Shielded 8P8C/RJ45 connectors



# USB Cables

## Setting The Standard For Computer Audio

Computer Audio has become increasingly popular over the past decade. Recently, audiophiles have seized the opportunity to streamline the process in which they enjoy their music by integrating music servers and DACs, or using laptops as sources for both two-channel, and personal audio systems. However, in order to maintain, and even enhance, the performance of your system, it is important not to neglect any aspect of your system's cabling. Nordost's Leif Series provides ultra high-speed, low-loss USB cables, specifically designed to deliver the best possible results from your computer audio sources.

Nordost offers a wide range of USB cables in the Leif series. Due to the various applications and requirements of today's hifi enthusiasts, Leif USBs are available with USB C, micro-B, mini-B, and classic, A-B terminations. However, no matter the application, you can be sure that incorporating Nordost USB cables into your system is the most efficient way to deliver those important ones and zeros with maximum precision, maintaining the correct impedance to dramatically lift your hifi system to a new level of performance.



### PURPLE FLARE

**Insulation:** Fluorinated Ethylene Propylene (FEP)

**Construction:** Twisted Shielded Pair Design

**Conductors:** 4 x 28 AWG

**Material:** Stranded, silver-plated 99.9999% OFC

**Shielding:** Dual layer foil and braid, 100% Coverage

**Velocity of Propagation:** 70% speed of light

**Termination:** Standard Type A to Standard A, Standard B, Micro-B, or Mini B USB 2.0

### BLUE HEAVEN

**Insulation:** Fluorinated Ethylene Propylene (FEP)

**Construction:** Micro Mono-Filament and Twisted Shielded Pair Design

**Conductors:** 4 x 20 AWG

**Material:** Stranded, silver-plated 99.9999% OFC

**Shielding:** Dual layer foil and braid 100% Coverage

**Velocity of Propagation:** 86% speed of light

**Termination:** Standard Type A or B USB 2.0

### RED DAWN

**Insulation:** Fluorinated Ethylene Propylene (FEP)

**Construction:** Micro Mono-Filament, Hybrid Twisted Pair/Non Twisted Pair Geometry

**Material:** Stranded, silver-plated 99.9999% OFC

**Shielding:** Dual layer foil and braid 100% Coverage

**Termination:** Type C to Standard B, Micro B, or Mini B USB 2.0

# Digital Interconnect

## Leave Jitter Behind

The safe transfer of digital data streams depends on achieving accurate impedance within the transmission chain. The S/PDIF transmission standard dictates a 75 Ohm co-axial lead, but it is surprising how few cables meet that specification.

The Blue Heaven Digital Interconnect is a true 75 Ohm conductor. Employing a Micro Mono-Filament, co-axial construction. This advanced topology allows us to achieve superior electrical performance and geometrical accuracy, irrespective of cable length. The Blue Heaven Digital Interconnect ensures high-speed, low-loss characteristics and, due to its BNC termination, the 75 Ohm standard is maintained, even across the connectors. Each Blue Heaven Digital Interconnect is supplied with a pair of true 75 Ohm BNC to RCA adaptors, making the cable consistent in performance across any combination of co-axial inputs or outputs.



### BLUE HEAVEN

**Insulation:** Fluorinated Ethylene Propylene (FEP)

**Construction:** Micro Mono-Filament

**Conductor:** 1 x 24 AWG

**Material:** Silver-plated 99.9999% solid core OFC

**Capacitance:** 14.0pF/ft

**Impedance:** 75 ohm

**Velocity of Propagation:** 85% speed of light

**Overall Shield Coverage:** 95% Braid

**Termination:** Gold-plated true 75 Ohm BNC, with Gold-plated BNC to RCA adapter



# HDMI Cable

## High-Definition Done Differently

Digital interconnect cables require extremely accurate impedance characteristics, close tolerances and consistent geometry—especially when it comes to high-performance HDMI cables. To stand any chance of meeting HDMI's exacting specification and transfer standards demands exceptional consistency from both the cable and the termination. The only way to guarantee that is to bring manufacturing and quality control in-house. The Blue Heaven HDMI Cable is manufactured using our proprietary Micro Mono-Filament construction to deliver superior electrical and mechanical characteristics. It is the only way we can guarantee a cable that will be absolutely consistent in performance and deliver the movie and musical performances that your system is really capable of. Blue Heaven HDMI is one cable you really can rely on to deliver on time, every time.



### BLUE HEAVEN

**Description:** High Speed HDMI Cable with ETHERNET

**Insulation:** Fluorinated Ethylene Propylene (FEP)

**Construction:** Micro Mono-Filament, twin-axial shielded pair design

**Conductors:** 19 x 26 AWG

**Material:** Silver-plated 99.9999% solid core OFC

**Velocity of Propagation:** 86% speed of light

**Overall Shield Coverage:** 100% Total coverage

**Approval:** DPL high speed certification to 5M length

**Termination:** Gold-plated, shielded HDMI connector

# Loudspeaker Cables

## Flat Out — The Best

If you are relatively unfamiliar with Nordost products, you may only know us by our unique, flat, speaker cables. The flat nature of our cables is not simply a tactic to stand out amongst our competition. The fact is, flat speaker cables perform better. Introducing a flat geometry to our speaker cables allows us to decrease the capacitance, strand interaction and skin effect in our product. If all this is true, why is Nordost the only cable manufacturer to leverage this design? Because only Nordost has the technology to produce the ultra-thin, air-tight, durable and flat cable, with the precision necessary to create a high quality audio cable.

Nordost's Leif Series speaker cables are constructed using silver-plated, solid core OFC conductors, which undergo an intricate FEP extrusion process to enhance the dielectric properties of the cables' insulation. The cable is then terminated in gold-plated z-plug banana, or spade, connectors. Leif Series speaker cables will provide significant gains to your sounds system, delivering greater power and musical purpose from your system than you would have thought possible at this price point.



### WHITE LIGHTNING

**Insulation:** Fluorinated Ethylene Propylene (FEP)  
**Conductors:** 10 x 26 AWG  
**Material:** Silver-plated 99.9999% solid core OFC  
**Capacitance:** 8.7pF/ft  
**Inductance:** 0.18μH/ft  
**Velocity of Propagation:** 94% speed of light  
**Termination:** Gold-plated Spade or Z-plug Banana

### PURPLE FLARE

**Insulation:** Fluorinated Ethylene Propylene (FEP)  
**Conductors:** 14 x 26 AWG  
**Material:** Silver-plated 99.9999% solid core OFC  
**Capacitance:** 9.25pF/ft  
**Inductance:** 0.17μH/ft  
**Velocity of Propagation:** 94% speed of light  
**Termination:** Gold-plated Spade or Z-plug Banana

### BLUE HEAVEN

**Insulation:** Fluorinated Ethylene Propylene (FEP)  
**Conductors:** 16 x 26 AWG  
**Material:** Silver-plated 99.9999% solid core OFC  
**Capacitance:** 9.6 pF/ft  
**Inductance:** 0.16 μH/ft  
**Velocity of Propagation:** 95% speed of light  
**Termination:** Gold-plated Spade or Z-plug Banana

### RED DAWN

**Insulation:** Fluorinated Ethylene Propylene (FEP)  
**Conductors:** 20 x 26 AWG  
**Material:** Silver-plated 99.9999% solid-core OFC  
**Capacitance:** 10.0pF/ft  
**Inductance:** 0.155μH/ft  
**Velocity of Propagation:** 95% speed of light  
**Termination:** Gold-plated Spade or Z-plug Banana







## Sort Kones

Every audio component in a sound system is susceptible to damaging vibrations. There are several isolators on the market that protect your gear from surrounding vibrations that enter your components; however, external vibration is only one part of the problem. The most harmful mechanical energy doesn't enter the equipment from outside; it is generated internally by the audio circuits and their power supplies. Transformers, power supply capacitors, and even the active devices themselves, all vibrate as they operate – and those vibrations occur right where the fragile signal is, creating timing errors that smear and distort the music. The Sort Kone is designed specifically to deal with this threat to audio fidelity.

Nordost's Sort Kones are resonance control devices. Thanks to their unique, three-part construction, Sort Kones create a mechanical diode which, when pressure is applied, creates a one-way path for extraneous energy to escape from the chassis of electronics. When placing Sort Kones under audio components (a minimum of three Sort Kones/unit is required) the results are unmistakable: music

becomes more focused, there is an increase in depth and transparency in system performance, and the dynamic range is broadened. Nordost Sort Kones are available in four levels of performance to fit a wide range of system and budgetary needs.



- AC:** Aluminum post and base in combination with an upgraded ceramic coupling ball.
- BC:** Bronze post and base elements in combination with an upgraded ceramic coupling ball.
- TC:** Titanium post and base in combination with an upgraded ceramic coupling ball.

# ECO 3X

Today's current technology allows for multiple source options and increasingly complex audio/AV systems, which generate excessive static, flattening perspectives and inhibiting dynamics. Using antistatic treatment on cable jackets, as well as racks, plastic cones under drive units, TV and computer screens, CDs, SCDs, DVDs and Blu-ray discs, improves both visual and audio performances. Once static has been removed, your system will be able to achieve the striking sense of liveliness and clarity that had been missing before.



# System Solution: Set-Up & Tuning Discs

This two-disc set is an invaluable tool for the installation, maintenance, and fine-tuning of any hifi audio system. Our sound engineers have incorporated a unique mix of diagnostic tracks, calibration tools, and system conditioning aids to facilitate full-range loudspeaker positioning and sub-woofer integration, and even degauss and burn-in your system. Our most refined set-up and tuning offering to date, the System Solution boasts improved usability, greater resolution, and unique new features.



## WHITE LIGHTNING

Interconnect  
Balanced Interconnect  
Loudspeaker Cable



## PURPLE FLARE

Interconnect  
Balanced Interconnect  
USB 2.0 Cable  
Fig-8 Power Cord  
Loudspeaker Cable



## BLUE HEAVEN

Interconnect  
Balanced Interconnect  
Subwoofer Cable  
iKable  
Tonearm Lead  
Headphone Cable  
Ethernet Cable  
75 Ohm Digital Lead  
USB 2.0 Cable  
HDMI Cable  
Power Cord  
Loudspeaker Cable



## RED DAWN

Interconnect  
Balanced Interconnect  
USB C Cable  
Power Cord  
Loudspeaker Cable



NORDOST

Nordost 93 Bartzak Drive Holliston MA 01746 USA

Email: [info@nordost.com](mailto:info@nordost.com)  
Website: [www.nordost.com](http://www.nordost.com)